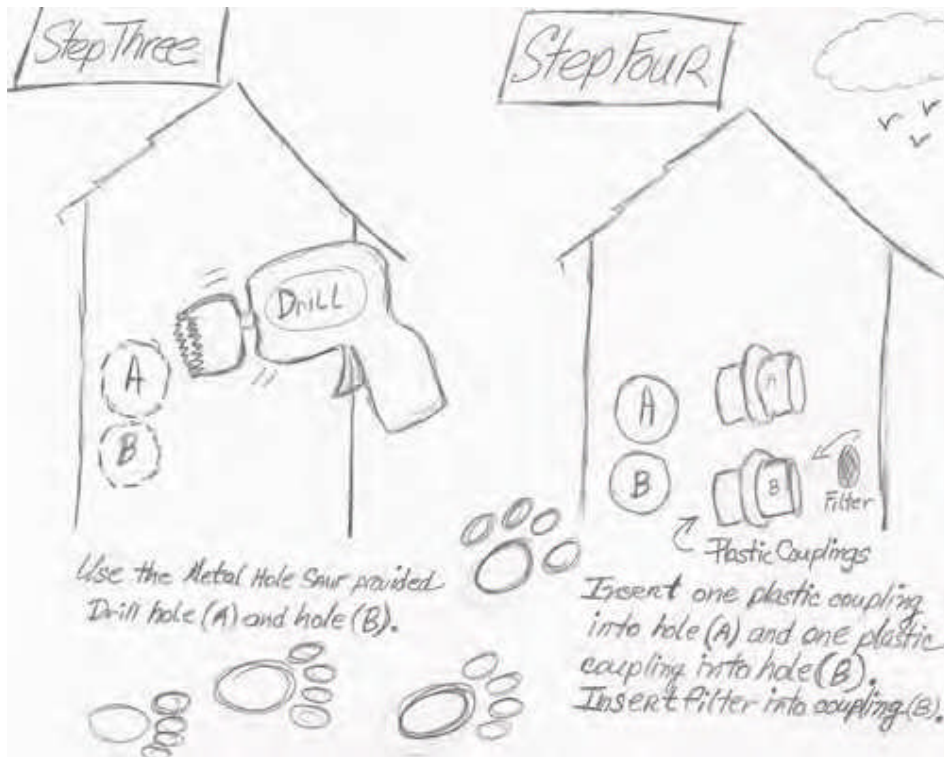
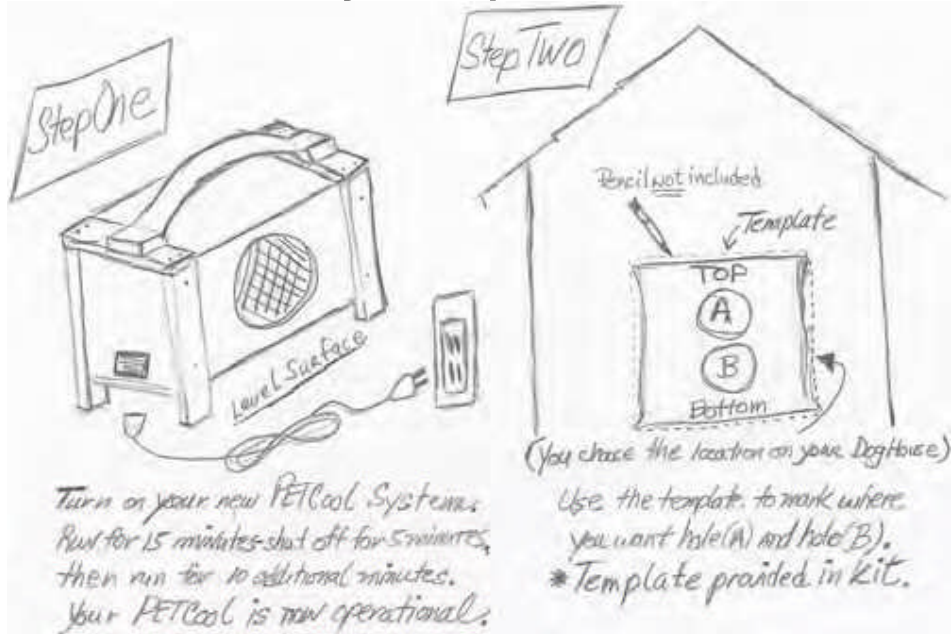


# The Seven Easy Steps of Installation





Attach one hose to coupling in hole (A)  
and one hose to coupling in hole (B).  
Secure each hose with a pinch clamp.



Now connect the PetCool to your  
pet's home by connecting one hose  
to each coupling on the PetCool.  
Secure each hose to its coupling  
with a pinch clip.

Step Seven



Attach the plastic Doggie Door  
to your pet's home.  
Use the two Doggie Door screws provided.